

SouthCal BB-03 END

A CONNECTED CALEDON COMMUNITY

ELEV A: 1555 SQ. FT.



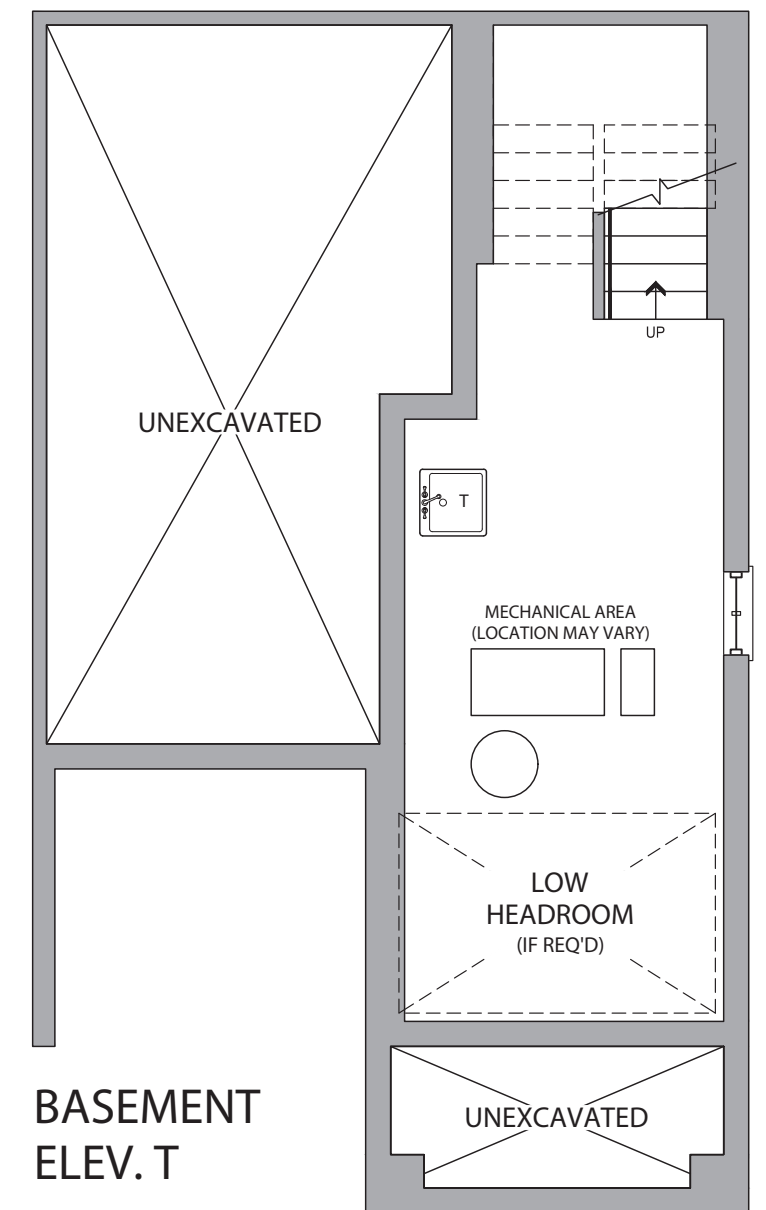
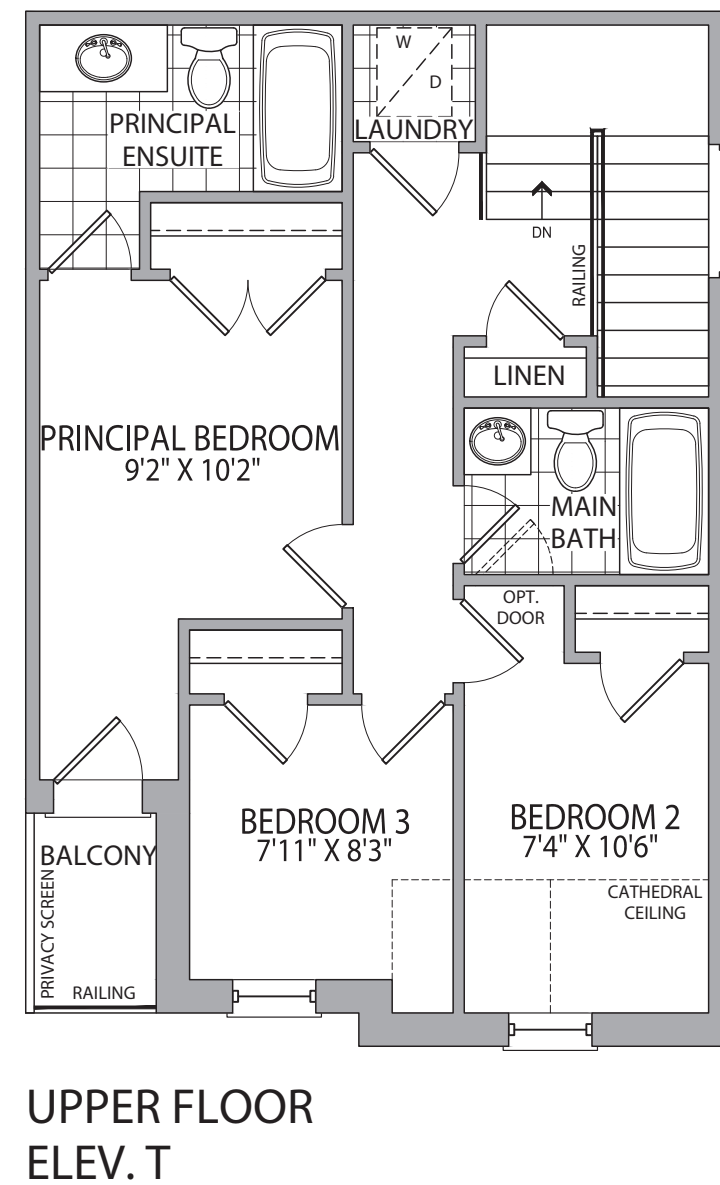
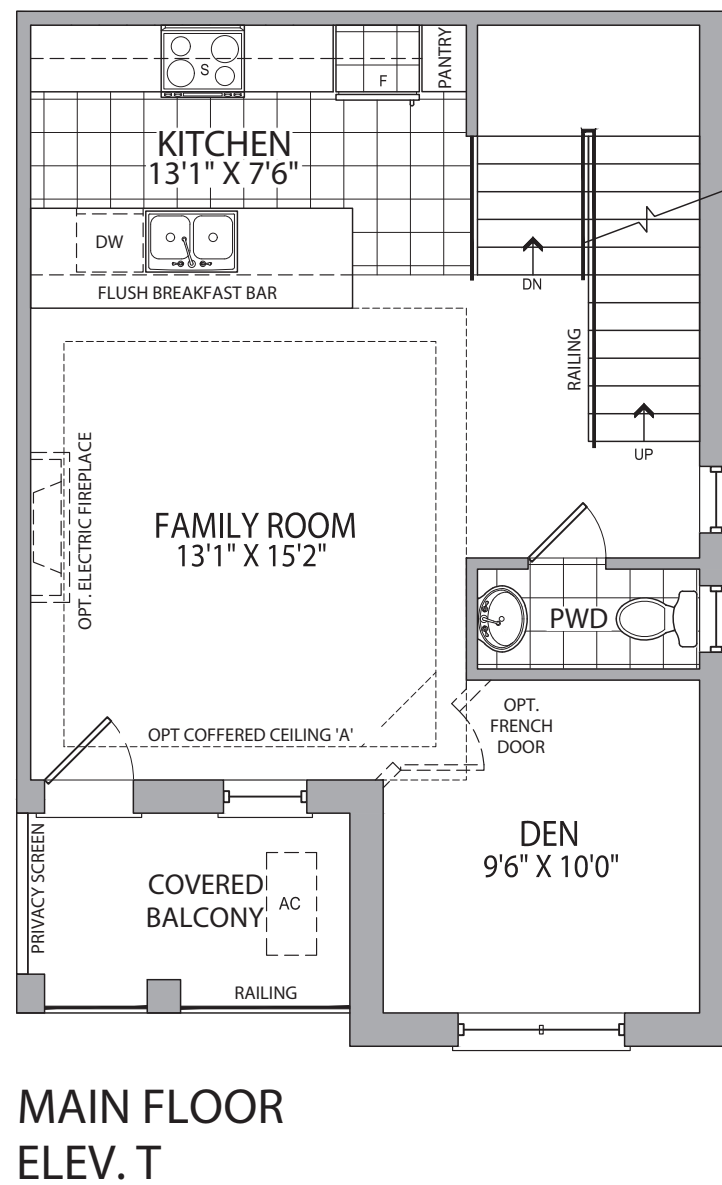
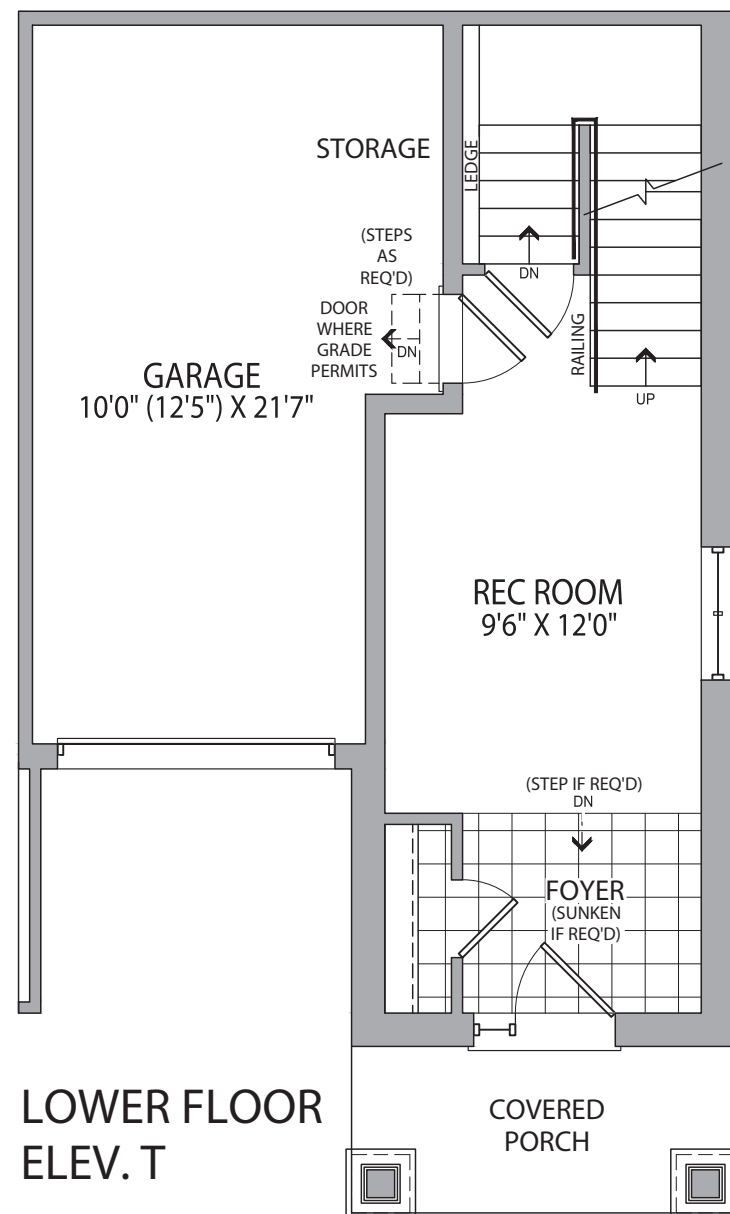
3 BEDS



2 FULL BATHS
1 HALF BATH



ELEV T



Floor plan shown refers to end unit condition. Materials, specifications and floor plans are subject to change without notice. All renderings are artist's conceptions. All floor plans are approximate dimensions. Actual usable floor space may vary from the stated floor area. E. & O.E. BB-03 END