

38'/05



ELEVATION A **2880** SQ. FT.



ELEVATION B **2865** SQ. FT.

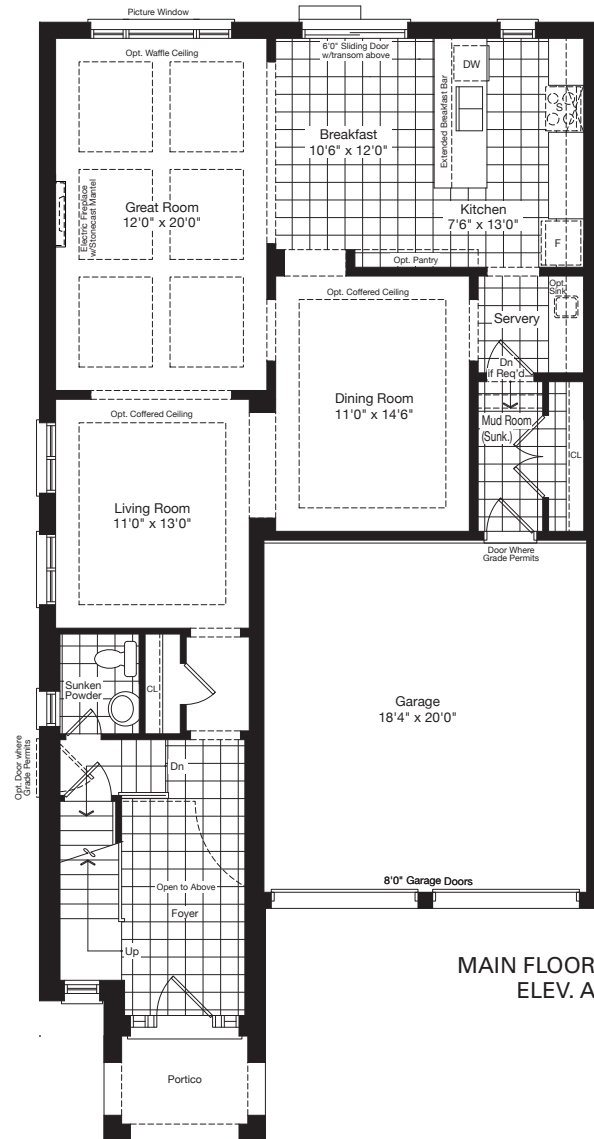
38'/05

ELEV. A **2880** SQ. FT.

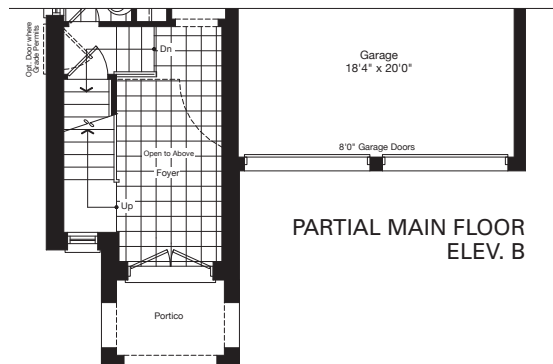
ELEV. B **2865** SQ. FT.



ELEVATION A

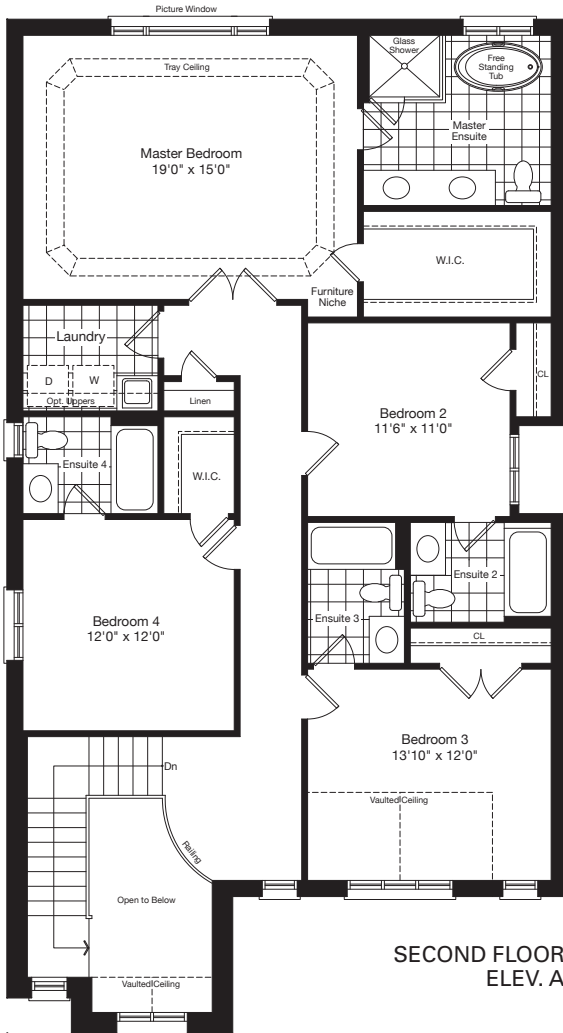


MAIN FLOOR
ELEV. A

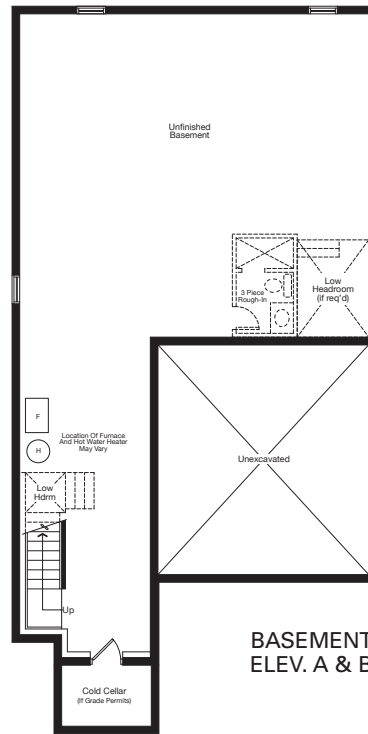


PARTIAL MAIN FLOOR
ELEV. B

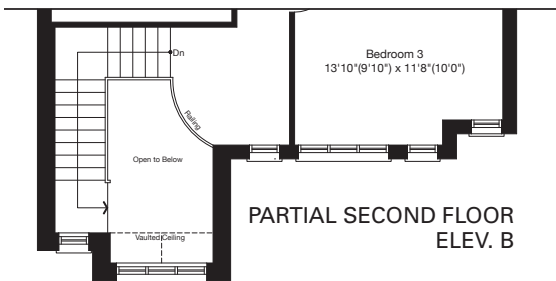
OPT. GROUND FLOOR
KITCHEN LAYOUT
ELEV. A & B



SECOND FLOOR
ELEV. A



BASEMENT
ELEV. A & B



PARTIAL SECOND FLOOR
ELEV. B



Opt. Double Door
Entry Available